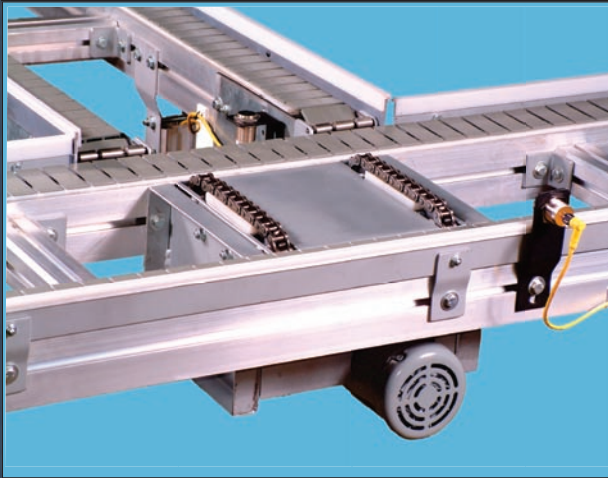


ADAPT™ Modular Conveyors

***The Ultimate
in Strength
and Flexibility***

***Hohl Machine
& Conveyor Co., Inc.***





Modular Transfers

- **The Adapt™ Pop-up Transfer provides a 90 degree change in direction. This allows the product to be transferred onto right angle conveyors, parallel lines or machine load stations.**

Controls & Part Tracking

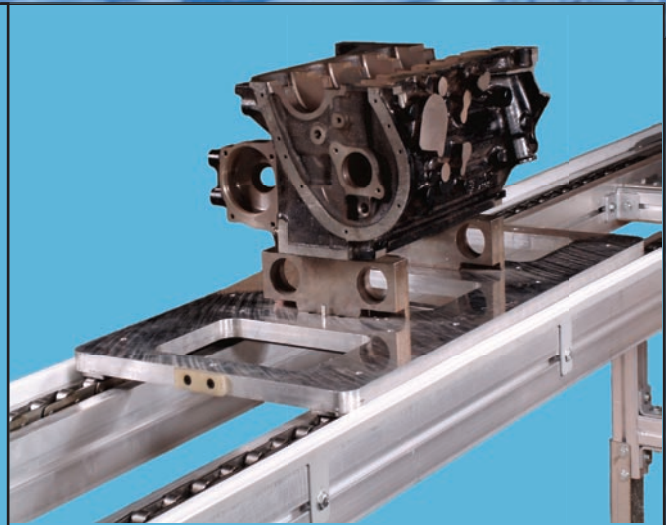
- **Hohl can provide you with a simple conveyor or a fully automated system with computer control and part tracking. The modular design allows the system to be easily upgraded.**

T-Slot Mounting

- **“T” Slots allow for universal mounting of supports, guides, sensors, transfers and positioners.**

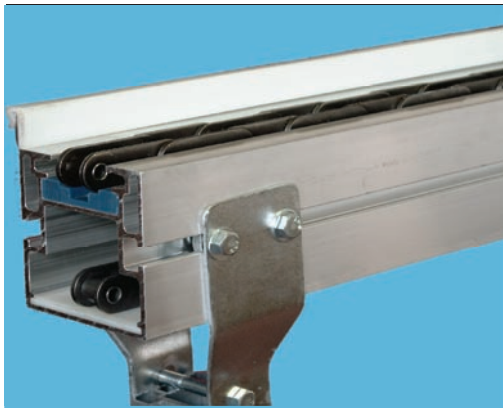
Standard and Custom Product Pallets

- **The Adapt™ Modular Conveyors can carry products directly on the chains and belt or can utilize standard and custom pallets.**
- **Part fixturing with precision alignment available for complex assembly operations on the conveyor.**



Drive and Tail Assembly

- **Modular drive assembly from 1/4 to 5 HP.**
- **Speeds up to 200 feet per minute**
- **Automatic chain and belt take-up for reduced maintenance**
- **Integral shaft-mounted reducer eliminates drive chain and sprocket adjustments**
- **All heavy-duty precision components**
- **Bolt-on tail assembly allows for quick change in conveyor lengths.**
- **Drive and take-up units are fully enclosed to eliminate pinchpoints, allowing production personnel to work in close proximity to the conveyor.**

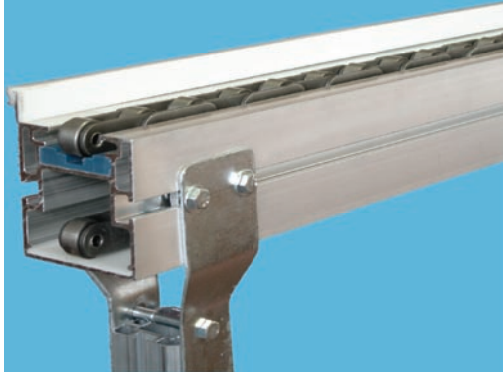


Adapt™ Chain Conveyors

- Heavy-duty chain conveyor used for non-accumulating and indexing operations such as synchronous assembly.
- Modular pop-up transfers, workstations and positioners are available with all conveyors.

Model No. HC-Adapt

- Chain No. 2080
- Max. load per drive: 9000#
- Max. load per foot: 500#
- 1/2 to 5 HP. drives
- Speeds of 1 to 200 FPM
- 24V. DC, 110/220/1/60, 220/460/3/60
- Servo drives with encoders
- Standard mounting for most photocells, prox. switches and valves

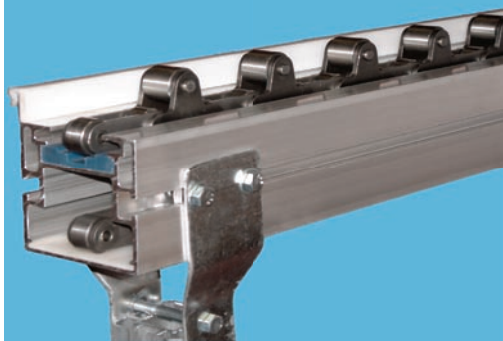


Adapt™ Power & Free Conveyors

- Heavy-duty carrying roller chain allows zero-pressure and slug accumulation.
- Modular stops and escapements allow for accumulation and single pallet release.

Model No. PF-Adapt

- Chain No. 2082
- Max. load per drive: 6000#
- Max. load per foot: 500#
- 1/2 to 5 HP. drives
- Speeds from 1 to 200 FPM
- 24V. DC, 110/220/1/60, 220/460/3/60
- Servo drives with encoders
- Standard mounting for most photocells, prox. switches and valves

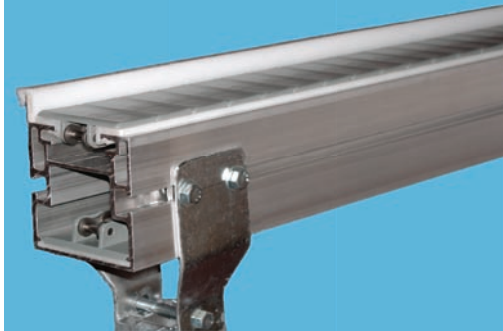


Adapt™ Heavy-Duty Power & Free Conveyors

- This chain has separate top accumulation rollers and bottom load carrying rollers for extremely low friction accumulation. This allows for heavy loads and long runs of conveyor on a single drive.

Model No. HPF-Adapt

- Chain No. 2082TR
- Max. load per drive: 12000#
- Max. load per foot: 500#
- 1/2 to 5 HP. drives
- Speeds from 1 to 200 FPM
- 24V. DC, 110/220/1/60, 220/460/3/60
- Servo drives with encoders



Adapt™ Table-Top Belt Conveyors

- Up to 3-1/4" wide straight and side flexing chain can be utilized on a single rail for small products or dual rail for large products and pallets.
- Complex combinations of straight and curved sections on a single drive allow for economical systems.

Model No. FT-Adapt

- Belt No. 863-K325 (Straight running)
- Max. load per drive: 6000#
- Max. load per foot: 200#
- or -
- Belt No. 1873-K325 (Side flexing)
- Max. load per drive: 4000#
- Max. load per foot: 200#



Adapt™ Belt Conveyors

- 3" Wide belts can be used in single drive and dual lane with high-friction for high angled inclines and declines or slip top for accumulation.
- Plastic or steel mesh belts with optional cleats provide product or pallet separation for synchronous operation.

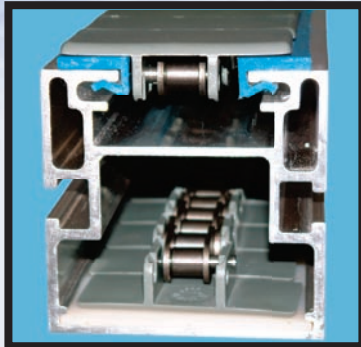
Model No. HB-Adapt

- Belt No. Intralox®
- Max. load per drive: 2500#
- Max. load per foot: 125#
- or -
- Belt No. PVC-150
- Max. load per drive: 2000#
- Max. load per foot: 150#

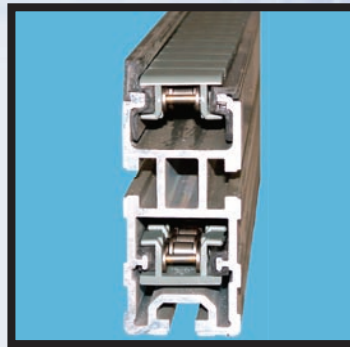
ADAPT™ Modular Conveyors



Ours



Theirs



Adapt™ heavy-duty cross section provides well over twice the beam strength of our competitors heaviest rail. Chain based belts are provided with #60 precision roller chain with 1400 pounds working strength, over twice the working tension of our competitor's #40 based chain. Higher capacity means fewer drives required for longer links and heavier loads. Higher capacity also provides additional flexibility when reconfiguring assembly lines for future products.

**Hohl Machine
& Conveyor Co., Inc.**

Internet: <http://www.hohl.com>

*** Distributor's Address Label Here ***

1580 Niagara St. Buffalo, NY. 14213
Ph: 716-882-7210 Fax: 716-882-9575

